

# Focus Four: Time to Add A New Focus?



Falls  
38.8%



Struck-By  
9.6%



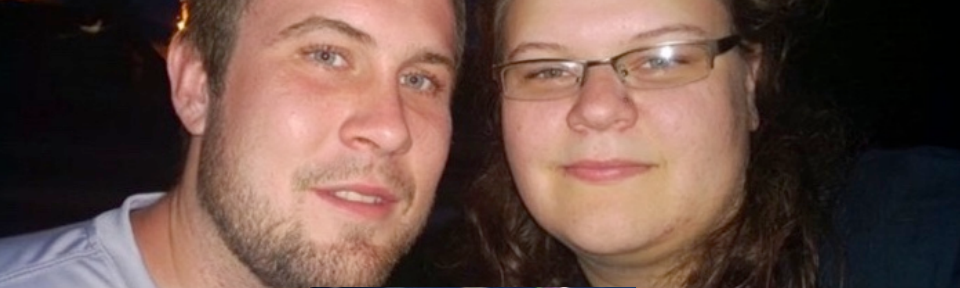
Caught-In or -Between  
7.2%



Electrocution  
8.6%

## Construction Ahead

Be Prepared to Talk  
About Addiction, Suicide, and  
Mental Health



We are all facing addiction in some way.



## A STAGGERING SITUATION

**Every 4 minutes, someone in the U.S. dies from drug or alcohol addiction – the equivalent of a jet crashing every day.**

- 20 million Americans are suffering
- 23 million more are in recovery
- 1 in 3 households are personally impacted

**Addiction costs the U.S. \$442 billion every year – 70% of which comes directly from lost productivity in the private sector.**

**Construction accounts for approximately 4% of Gross Domestic Product annually in the US:**

- **Alcohol - \$9.96 Billion**
- **Substance Use - \$7.72 Billion**
- **Mental Health - \$8 Billion**

...ONLY GROWING IN URGENCY

**“We must recognize that addiction is not a moral failing. It is a chronic illness that must be treated with skill, urgency and compassion.”**

**– 19<sup>th</sup> US Surgeon General, Vivek H. Murthy**



**FACING ADDICTION  
IN AMERICA**

*The Surgeon General's Report on  
Alcohol, Drugs, and Health*

U.S. Department of Health & Human Services

# FACING ADDICTION IN AMERICA:



THE SURGEON GENERAL'S REPORT  
ON ALCOHOL, DRUGS, AND HEALTH

**TODAY IN AMERICA, DRUG AND ALCOHOL ADDICTION IS A MAJOR PUBLIC HEALTH CRISIS.**

# The Path Forward: A Clear Strategy

1

REBRAND  
ADDICTION

2

CREATE THE  
“ONE PLACE”

3

LONG TERM  
SYSTEMS  
CHANGE

## TOGETHER WE CAN

- Develop more effective prevention and early intervention programs.
- Close the 90% treatment gap among those suffering.
- Reduce the economic toll of addiction and mental health issues in the construction industry.



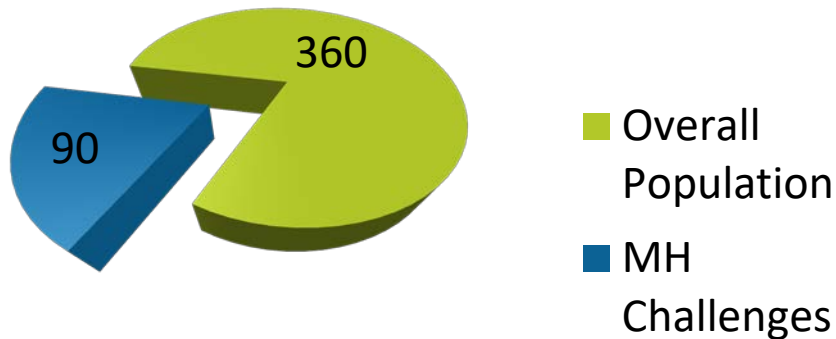
# Typical Risk Factors (and Stereotypes) Construction

|   |  |  |
|---|--|--|
| Stoic, "tough guy" culture                | Seasonal employment/income fluctuation | Exposure to physical strain and potential injury     |
| Capability for fearlessness               | Fragmented Community/Isolation         | Industry with highest rate of prescription opioids   |
| Culture of substance use                  | Access to lethal weapons               | High pressure with risk of failure                   |
| Men in high-skill/high-stakes occupations | Potentially less educated workforce    | Sleep disruption                                     |
| Time away from family and support systems | Peer pressure                          | "Presenteeism" – including distraction lack of focus |

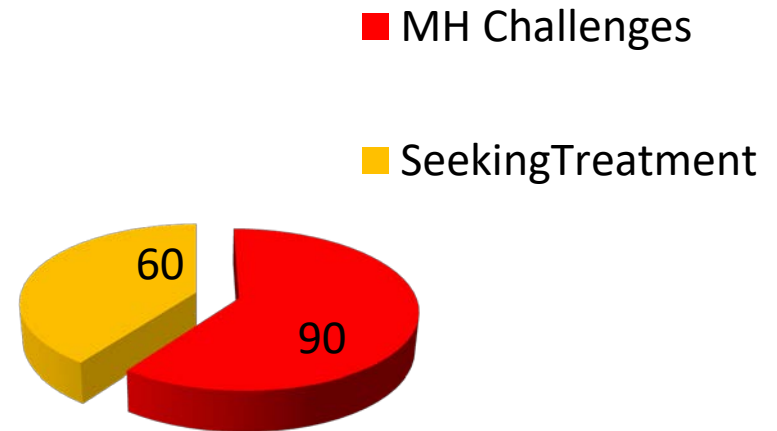
# Mental Health Challenges

## Overall

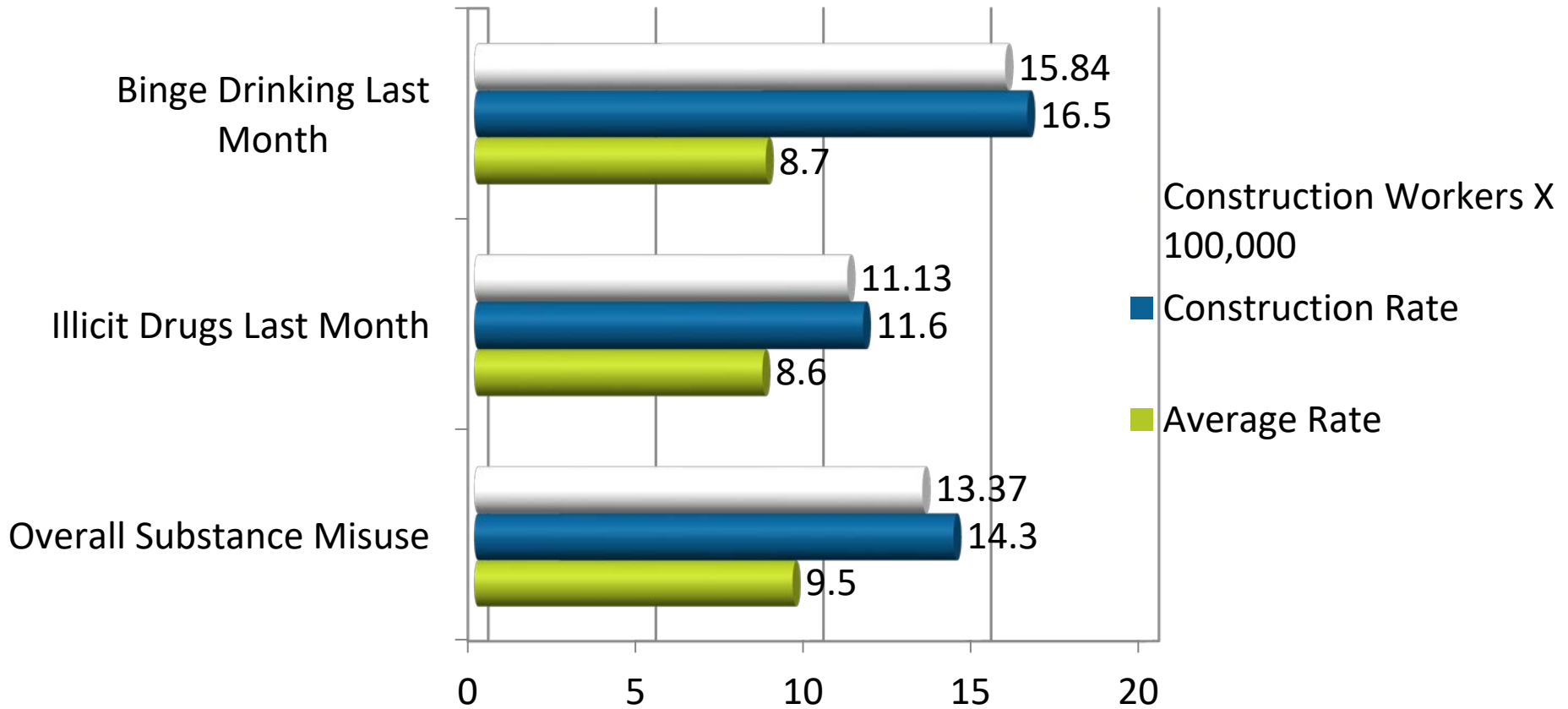
Population with Mental Health Challenges



Treatment



# Substance Misuse Average Annual (2008-2012)



Substance Abuse and Mental Health Services Administration (SAMHSA) Data

# Suicide

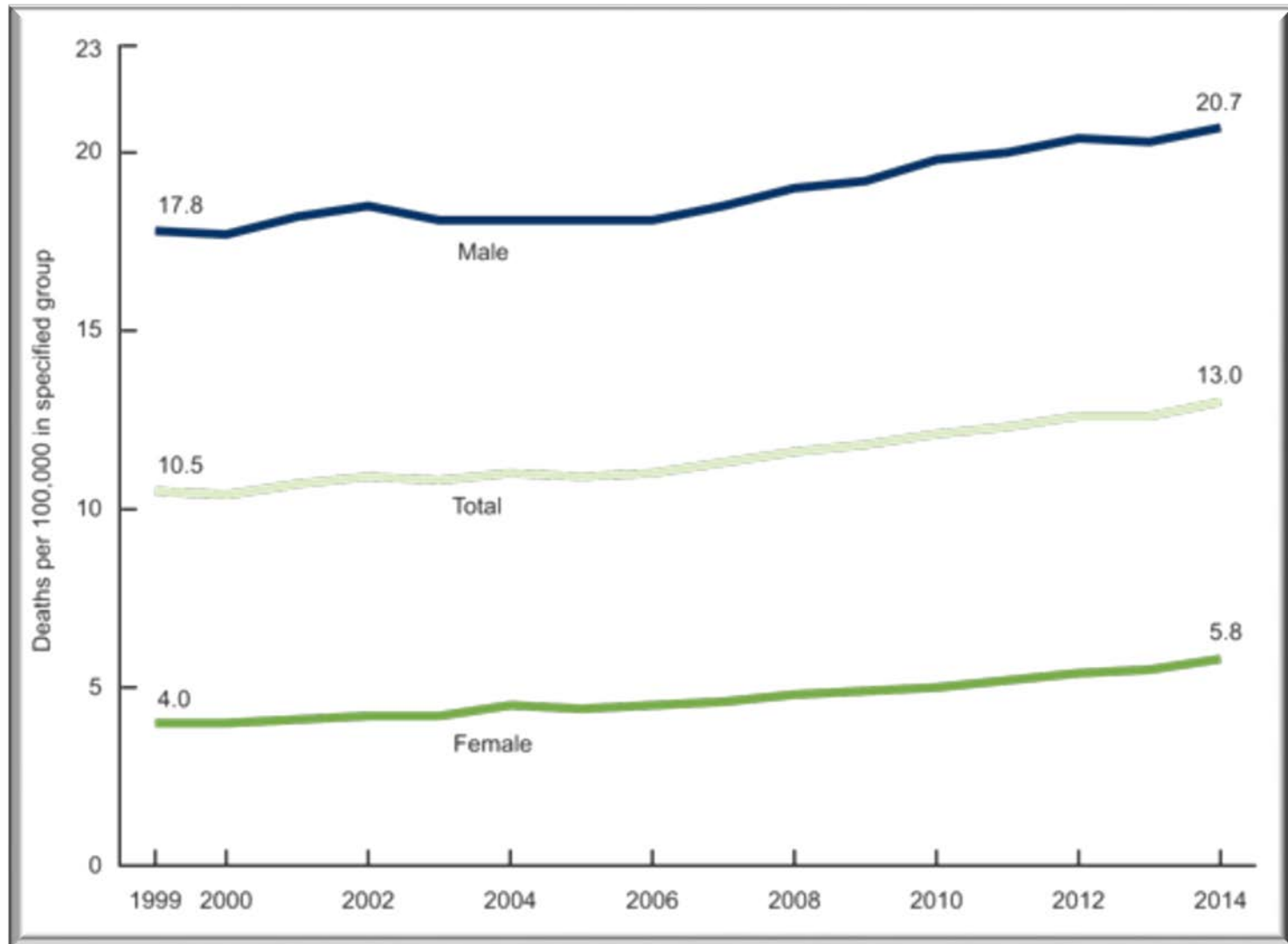
Suicide is the  
10th  
leading cause of  
death in the US

Suicide costs the  
US \$51 Billion  
annually

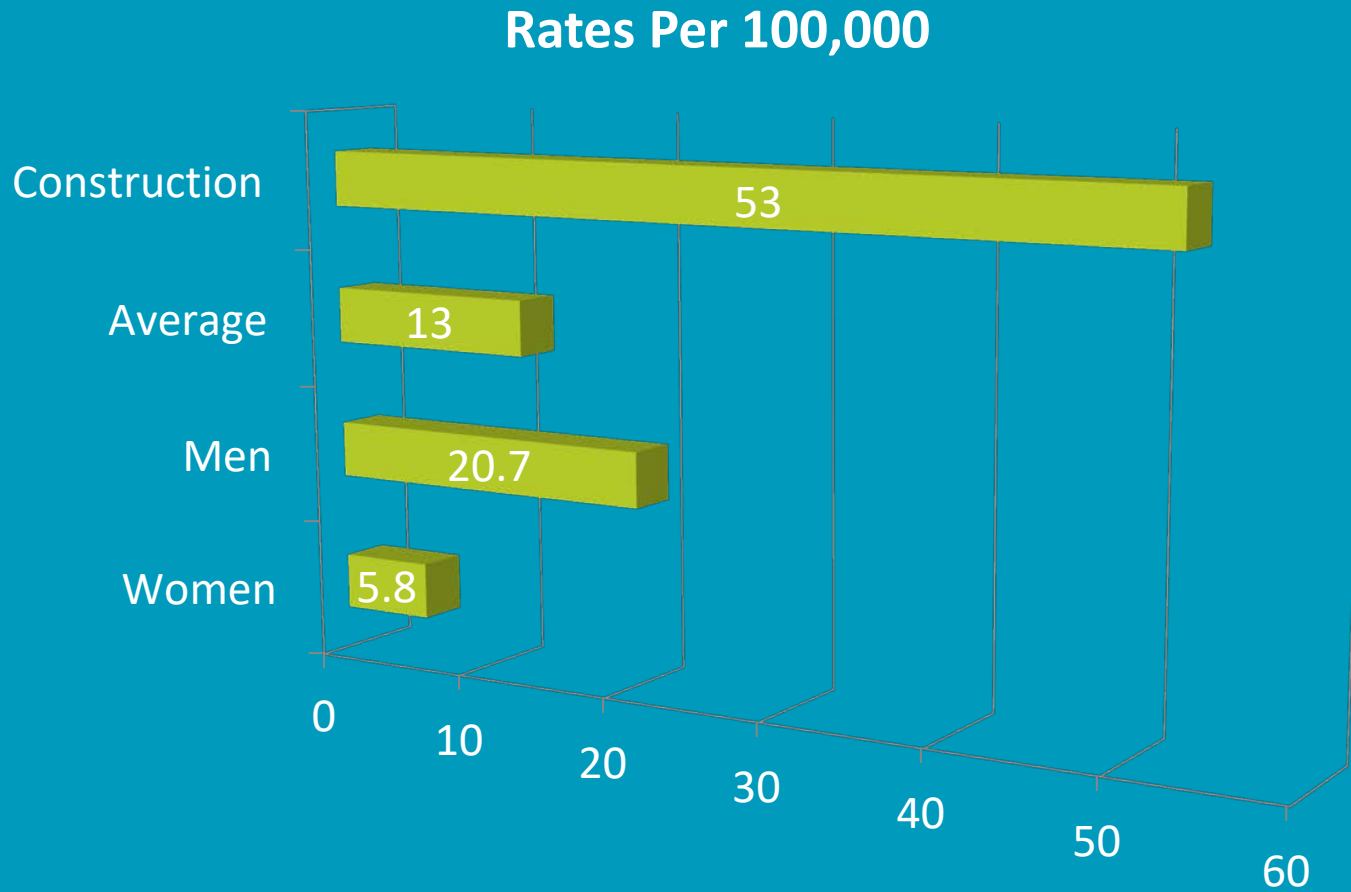
For every suicide,  
25 attempt

Each year  
44,193  
Americans die by  
suicide

# Suicide Death Rates Overall



# Suicides 2015



# Human Costs – Time to Re-Focus?

- 2015
  - 44,193 Deaths by Suicide Overall
    - 4836 “OSHA related” deaths in all industries
    - 985 “OSHA related” deaths (falls, caught in between, struck by, electrocutions, collectively known as the Focus Four) in construction
    - 4300 Suicides in Construction
    - 5200 AEC Overall

# Labor Helping Labor





# What Are Members Assistance Programs (MAP)?

- Peer based program that provides confidential help, and referral services to Union Members in need.
- MAP members specialize in:
  - Addiction
  - Stress
  - Family Issues
  - Marital Issues
  - Gambling Problems
  - Legal Issues
  - Anger Management
  - Conflict Resolution
  - Grief
  - Financial Burdens
  - Emotional Disorders
  - Dealing with change



# EAP VERSUS MAP



- Employee Assistance Programs are contracted on a per capita basis to provide assessment and referral
- Academic Professionals as staff



- Member Assistance Programs are usually peer based and function within the union or corporation
- Staff are usually employees of the company and/or union

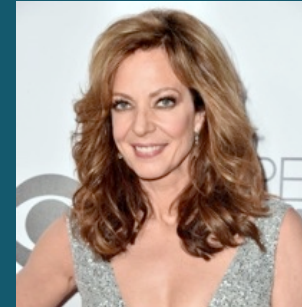
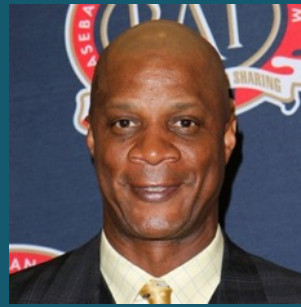
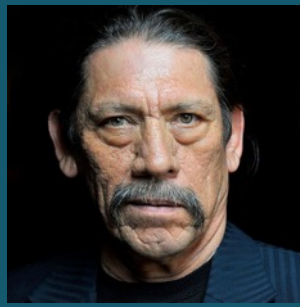
# Who are the Labor Assistance Professionals? (LAP)

- A peer based assistance program founded in 1990 by a group of union members who recognized the disconnect between union members, employers and professional addiction treatment
- Skilled representatives who provide confidential help to union members in need (peers).

# Return On Investment

- For every \$1.00 spent there is a return on investment between \$4 and \$7.
- It has been Local 478 Health Fund's experience, that while utilization is up, overall costs have come down.

## A BROAD BASE OF SUPPORT IN THE LABOR MOVEMENT & HOLLYWOOD



**AFL-CIO**  
AMERICA'S UNIONS



SHEET METAL | AIR | RAIL | TRANSPORTATION  
**SMART**



**LiUNA!**





WHERE WE GO FROM HERE

Help us build a national movement to forever change how we face addiction, suicide, and mental health. Together, we can save lives — starting now.



# Three Key Next Steps

- Leadership
  - What motivates people to act?
- Learning
  - What more do we need to know?
  - How do we address stigma?
- Legacy
  - What will we do?

# Contact

- Marko Kaar, CHST, Bartlett Brainard Eacott
  - [860.593.0555](tel:860.593.0555)
  - [MKaar@bbeinc.com](mailto:MKaar@bbeinc.com)
  - [www.cfma.org/SuicidePrevention](http://www.cfma.org/SuicidePrevention)
- Greg Williams, EVP, Facing Addiction
  - [203.733.8326](tel:203.733.8326)
  - [gwilliams@facingaddiction.org](mailto:gwilliams@facingaddiction.org)
  - [www.FacingAddiction.org](http://www.FacingAddiction.org)
- Kyle Zimmer, LAP-C, IUOE Local 478
  - [203.537.2207](tel:203.537.2207)
  - [kzimmer@local478benefits.org](mailto:kzimmer@local478benefits.org)
  - [www.LaborAssistanceProfessionals.com](http://www.LaborAssistanceProfessionals.com)