

December 2010

Wage and Benefit Settlements in Construction 2010

Settlements in newly negotiated labor agreements reported to the Construction Labor Research Council in 2010 averaged \$.80 or 1.7 percent for their first year. The average second year increase for multi-year agreements was \$1.16 or 2.1 percent. Results during the past year are a continuation of the trend started in 2009:

- o Average increase declined
- o Average duration decreased
- o A disproportionate amount of new money was allocated to pension funds.

The average first year increase dropped from 2009's \$1.23 or 2.8 percent which was already smaller than any amount in the past decade. The last time the average first year increase was less than two percent was 1985. An average increase under \$1.00 was last recorded in 1998.

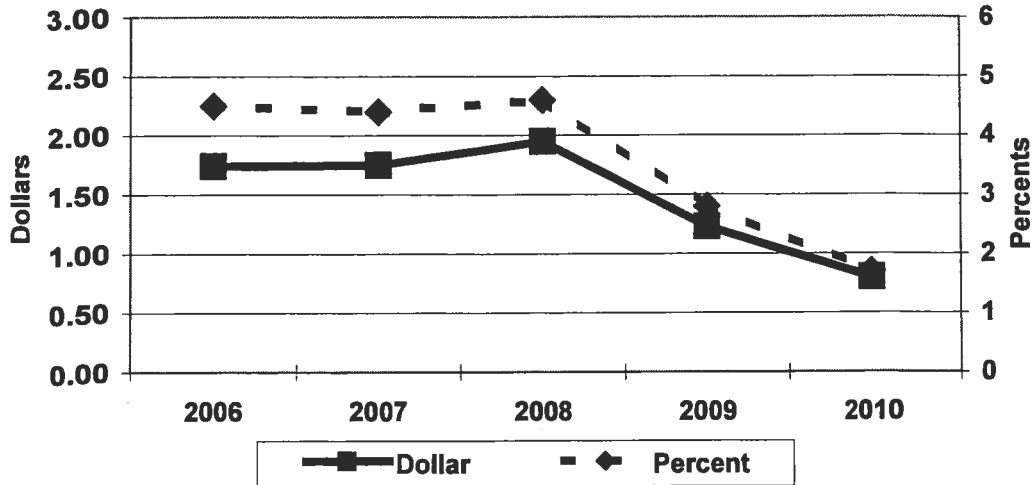
The lower level of first year increases was largely the result of the large number of contracts in which there was no increase. In a quarter of the new agreements wages and fringes were frozen or reduced. Almost half (\$.38) of the average total package increase was designated for higher contributions to pension funds. Average second and third year increase was also below the amounts of 2009.

Regional Variation

The average first year percentage increase in the three regions with the most workers covered by new agreements was either 1.8 or 2.0 percent. There was a range of \$.20 in their dollar increases. This is less variability than in most years.

Lower first year increases were recorded in all regions (dollars and percents). Freezes and decreases were least likely in the Middle Atlantic. Almost half the multi-year agreements were in the East North Central.

Construction Settlements
First Year Increase in Wage Plus Benefit Rate
Dollars and Percents 2006 through 2010



Craft Variation

Average first year increases for most crafts were clustered around the all crafts average. All were within one percentage point of the national average. Even with the narrow range, craft differences primarily reflect the regions of the country in which the contracts were negotiated.

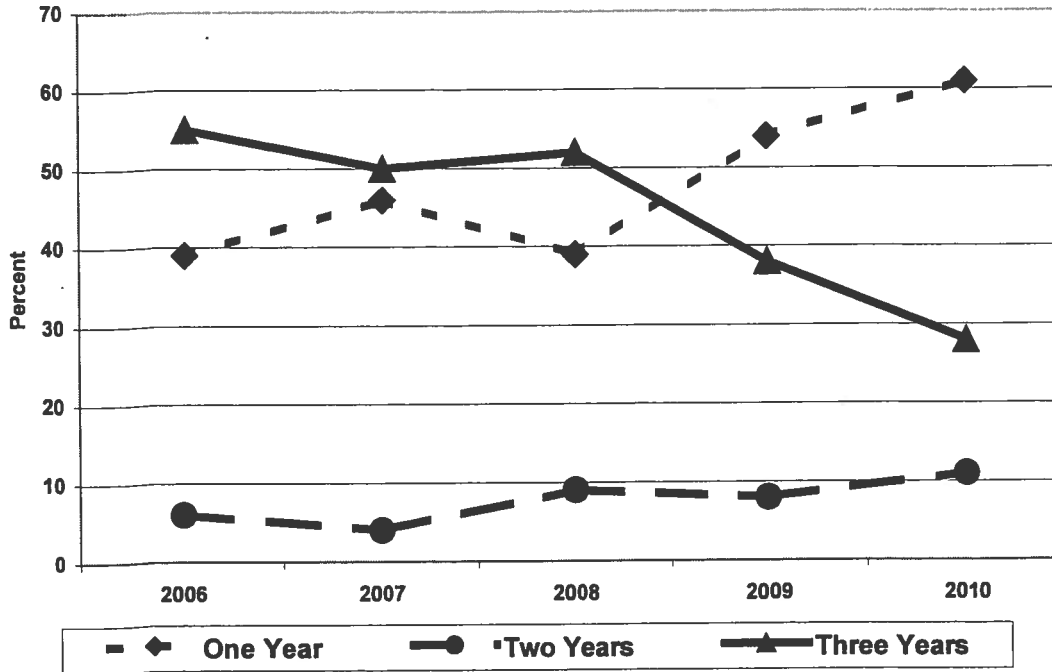
Industry Economic Climate

Construction employment has been stable throughout the year at just above 5.6 million. This is, however, a further 400,000 decline from 2009. Industry employment peaked in 2006 at 7.7 million.

Volume was down overall with reductions recorded throughout the private sector. Small gains in the public sector will still leave total activity down close to 10 percent. Within public construction only power and sewage and waste disposal were up more than 10 percent. They only account for just over 10 percent of public construction.

Inflation, as measured by the Consumer Price Index, will increase by less than two percent in 2010. The annual increase in construction wages and fringes has exceeded increases in the CPI for over a decade.

Contract Duration

Contract Duration

As has historically been the case, low average settlement level has been accompanied by shorter term of contract. Close to 60 percent of new agreements were negotiated for one year. Prior to 2009, one year contracts accounted for close to 40 percent of the total with three year agreements most prevalent.

Settlement Dollar Report by US (Summary)

U.S.TOTALS	Year											Total	Average	Covered
		.59 or Less	.60	.79	.80	1.00	1.20	1.40	1.60	1.80	2.00			
	1	176	40	23	31	26	33	10	10	11	19	379	\$0.80	410,950
	2	36	20	10	21	19	17	9	4	7	4	147	\$1.16	232,171
	3	8	6	15	21	26	10	10	3	4	3	106	\$1.39	142,773

Settlement Percent Report by US (Summary)

U.S.TOTALS	Year											Total	Average	Covered
		0 or less	.0	1.0	2.0	3.0	4.0	5.0	6.0	7.0	8.0			
	1	101	29	81	70	66	18	9	2	1	2	379	1.7%	410,950
	2	16	10	30	57	28	5	1				147	2.1%	232,171
	3		1	18	64	23						106	2.7%	142,773

Wage and Benefit Settlements
United States, Selected Regions and States¹

	<u>Settlements</u>	<u>Coverage</u> <u>Workers</u>	<u>Average 1st Year Increase²</u>	
			<u>Dollar</u>	<u>Percent</u>
United States	379	410,950	\$.80	1.7
		<u>Regions</u>		
Middle Atlantic	54	81,573	\$1.03	1.8
New York	22	31,691	1.27	2.0
Pennsylvania	23	38,758	0.92	1.8
Southeast	102	56,405	0.53	1.8
Alabama	24	7,476	0.51	1.8
Tennessee	42	23,775	0.59	2.2
East North Central	147	132,572	1.04	2.0
Illinois	45	55,692	1.76	3.2
Michigan	18	7,890	0.49	1.5
Minnesota	22	33,583	0.08	0.2
Ohio	41	25,839	0.74	1.8
South Central	19	15,840	0.17	0.3
Southwest Pacific	21	67,102	0.83	1.8
California	18	64,914	0.85	1.8

¹ Areas with a sufficient number of settlements to show a meaningful average.

² Weighted by number of workers covered.

* Too few agreements to show a meaningful average.

Settlement Dollar Report by Craft (Summary)

Craft	Year	.59 or	.60	.80	1.00	1.20	1.40	1.60	1.80	2.00	2.20	Total	Average	Covered
		Less	.79	.99	1.19	1.39	1.59	1.79	1.99	2.19	Over			
Bricklayers	1	23	2	2	1	1						29	\$0.29	14,855
Carpenters	1	23	1	2	2	1	2			3		34	\$0.70	105,345
Cement Masons	1	10	3	1	1	4	5					24	\$0.59	7,688
Crane Operators	1	11	1	6	4	1	2	1		1	6	33	\$1.31	63,727
Electricians	1	22	3		5	4	1	2	3	1	4	45	\$0.40	41,006
Ironworkers-Struct.	1	25	2	2	1	3	2	3		1	3	42	\$0.54	38,443
Laboreers-Bldg.	1	20	5	1	2	7		2	3	1		41	\$0.86	80,499
Millwrights	1	11		2	1	4	2					20	\$0.53	5,945
Pipefitters/Plumbers	1	5	4	2	1	3	3	1	1	2	3	25	\$1.02	18,869
Sheet Metal Workers	1	10	4		5	2	2	1				24	\$0.78	15,038

Settlement Percent Report by Craft (Summary)

Year	0 or	1.0	2.0	3.0	4.0	5.0	6.0	7.0	Total	Average Covered	
	Less	.9	1.9	2.9	3.9	4.9	5.9	6.9			Ove
Bricklayers	1	15	2	6	3	2	1		29	0.8	14,855
Carpenters	1	13	5	7	1	7		1	34	1.5	105,345
Cement Masons	1	8	1	3	8	4			24	1.2	7,688
Crane Operators	1	6	3	3	12	6	1	2	33	2.3	63,727
Electricians	1	9	4	13	6	7	2	4	45	0.8	41,006
Ironworkers-Struct.	1	12	8	7	4	8	3		42	1.1	38,443
Laborers-Bldg.	1	11		7	7	10	4	2	41	2.1	80,499
Millwrights	1	7		4	5	2	1	1	20	1.2	5,945
Pipefitters/Plumbers	1	2	2	4	4	10	3	3	25	2.2	18,869
Sheet Metal Workers	1	5	4	8	6	1			24	1.5	15,038

Settlement Dollar Report by Region (Totals)

Region	Year	59 or	.60	.80	1.00	1.20	1.40	1.60	1.80	2.00	2.20	Total	Average	Covered
		Less	.79	.99	1.19	1.39	1.59	1.79	1.99	2.19	Over			
Middle Atlantic														
	1	11	7	7	7	7	6	2	2	4	8	54	\$1.03	81,573
Southeast														
	1	57	17	8	11	4	2	1	1	1		102	\$0.53	56,405
East North Central														
	1	63	9	14	7	8	18	5	6	6	11	147	\$1.04	132,572
	2	22	8	7	12	3	3	4	4	5	1	69	\$1.09	100,758
	3	2	4	14	10	8	2	5	2	4	1	52	\$1.38	94,406
South Central														
	1	15	4									19	\$0.17	15,840
Southwest Pacific														
	1	12	1		1	2	4	1				21	\$0.83	67,102

Settlement Percent Report by Region (Totals)

Region	Year	0 or	1.0	2.0	3.0	4.0	5.0	6.0	7.0	8.0	Total	Average Covered	
		Less	.9	1.9	2.9	3.9	4.9	5.9	6.9	7.9			Ove
Middle Atlantic													
	1	6	3	11	9	19	4	2			54	1.8	81,573
Southeast													
	1	30	10	27	11	18	3	2	1		102	1.8	56,405
East North Central													
	1	36	12	23	35	22	10	7		2	147	2.0	132,572
	2	8	10	13	25	11	1	1			69	2.1	100,758
	3		1	8	29	14					52	2.6	94,406
South Central													
	1	9	2	5	3						19	0.3	15,840
Southwest Pacific													
	1	8		6	4	2	1				21	1.8	67,102

STATES and REGIONS

New England

Connecticut
 Maine
 Massachusetts
 New Hampshire
 Rhode Island
 Vermont

Middle Atlantic

District of Columbia
 Delaware
 Maryland
 New Jersey
 New York
 Pennsylvania

Southeast

Alabama
 Florida
 Georgia
 Kentucky
 Mississippi
 North Carolina
 South Carolina
 Tennessee
 Virginia

East North Central

Illinois
 Indiana
 Michigan
 Minnesota
 Ohio
 West Virginia
 Wisconsin

West North Central

Iowa
 Kansas
 Missouri
 Nebraska

South Central

Arkansas
 Louisiana
 New Mexico
 Oklahoma
 Texas

Mountain-Northern Plains

Colorado
 Montana
 North Dakota
 South Dakota
 Utah
 Wyoming

Southwest Pacific

Arizona
 California
 Hawaii
 Nevada

Northwest

Alaska
 Idaho
 Oregon
 Washington

This report has been prepared from information collected and maintained by CLRC. Reasonable efforts have been made to assure the accuracy of the data, summaries and analyses. However, due to the nature of the information and the collection process, accuracy, cannot be guaranteed. CLRC disclaims any liability from any damages of any kind which may result from the use of these data.

RECEIVED

DEC 29 2010

TAUC

2010 SETTLEMENTS

	Year 1	Year 2	Year 3	Year 4	\$	\$	\$	%	%	%
					Diff 1-2	Diff 2-3	Diff 3-4	Diff 1-2	Diff 2-3	Diff 3-4
Ironworkers-Struct.										
ANCHORAGE, ALASKA	\$52.42	\$54.09	\$55.09	\$56.09	\$1.67	\$1.00	\$1.00	3.2%	1.8%	1.8%
HUNTSVILLE, ALABAMA	\$31.57	\$32.72			\$1.15			3.6%	0.0%	
SHEFFIELD, ALABAMA	\$31.47	\$31.72			\$0.25			0.8%	0.0%	
SAN FRANCISCO, CALI	\$56.28	\$56.28			\$0.00			0.0%	0.0%	
WASHINGTON, D.C.	\$41.92	\$42.32			\$0.40			1.0%	0.0%	
ORLANDO, FLORIDA	\$32.64	\$33.88			\$1.24			3.8%	0.0%	
TAMPA, FLORIDA	\$37.09	\$37.09			\$0.00			0.0%	0.0%	
ATLANTA, GEORGIA	\$33.64	\$33.74			\$0.10			0.3%	0.0%	
AURORA, ILLINOIS	\$66.35	\$69.03			\$2.68			4.0%	0.0%	
CHAMPAIGN, ILLINOIS	\$44.59	\$45.47			\$0.88			2.0%	0.0%	
SOUTHWEST, ILLINOIS	\$46.66	\$48.98			\$2.32			5.0%	0.0%	
JOLIET, ILLINOIS	\$63.66	\$65.71			\$2.05			3.2%	0.0%	
ROCK ISLAND, ILLINOI	\$44.58	\$45.37	\$46.62	\$48.12	\$0.79	\$1.25	\$1.50	1.8%	2.8%	3.2%
ROCKFORD, ILLINOIS	\$56.50	\$57.38			\$0.88			1.6%	0.0%	
SPRINGFIELD, ILLINOI	\$44.92	\$46.17			\$1.25			2.8%	0.0%	
HAMMOND, INDIANA	\$54.95	\$57.58			\$2.63			4.8%	0.0%	
ASHLAND, KENTUCKY	\$45.45	\$47.21			\$1.76			3.9%	0.0%	
PADUCAH, KENTUCKY	\$38.61	\$39.26			\$0.65			1.7%	0.0%	
BOSTON, MASSACHUS	\$59.77	\$61.15			\$1.38			2.3%	0.0%	
BALTIMORE, MARYLAN	\$41.89	\$42.39			\$0.50			1.2%	0.0%	
MARQUETTE, MICHIGA	\$46.10	\$46.10	\$47.05	\$48.02	\$0.00	\$0.95	\$0.97	0.0%	2.1%	2.1%

2010 SETTLEMENTS

	Year 1	Year 2	Year 3	Year 4	\$	%	\$	%	\$	%	\$	%
					Diff 1-2	Diff 1-2	Diff 2-3	Diff 2-3	Diff 3-4	Diff 3-4	Diff 3-4	Diff 3-4
DULUTH, MINNESOTA	\$48.68	\$48.68	\$48.98	\$49.93	\$0.00	0.0%	\$0.30	0.6%	\$0.95	1.9%		
ST. PAUL, MINNESOTA	\$53.65	\$53.65	\$53.95	\$54.90	\$0.00	0.0%	\$0.30	0.6%	\$0.95	1.8%		
COLUMBIA, MISSOURI	\$43.99	\$45.43	\$46.93	\$48.43	\$1.44	3.3%	\$1.50	3.3%	\$1.50	3.2%		
ST. LOUIS, MISSOURI	\$48.09	\$49.59	\$51.09	\$52.59	\$1.50	3.1%	\$1.50	3.0%	\$1.50	2.9%		
ALBUQUERQUE, NEW	\$36.00	\$36.47			\$0.47	1.3%		0.0%				
SYRACUSE, NEW YOR	\$43.40	\$43.40	\$44.30		\$0.00	0.0%	\$0.90	2.1%				
CANTON, OHIO	\$40.40	\$40.40	\$40.40	\$41.05	\$0.00	0.0%		0.0%	\$0.65	1.6%		
CINCINNATI, OH	\$42.93	\$42.78			(\$0.15)	-0.3%		0.0%				
COLUMBUS, OHIO	\$42.54	\$42.95	\$43.55	\$44.29	\$0.41	1.0%	\$0.60	1.4%	\$0.74	1.7%		
DAYTON, OHIO	\$42.23	\$42.78			\$0.55	1.3%		0.0%				
PHILADELPHIA, PENNS	\$69.85	\$70.35			\$0.50	0.7%		0.0%				
CHATTANOOGA, TENN	\$31.29	\$31.29			\$0.00	0.0%		0.0%				
KNOXVILLE, TENNESS	\$31.15	\$31.25			\$0.10	0.3%		0.0%				
MEMPHIS, TENNESSEE	\$31.97	\$32.02			\$0.05	0.2%		0.0%				
NASHVILLE, TENNESS	\$31.67	\$31.82			\$0.15	0.5%		0.0%				
AUSTIN, TEXAS	\$23.65	\$24.15	\$24.65	\$25.15	\$0.50	2.1%	\$0.50	2.1%	\$0.50	2.0%		
DALLAS, TEXAS	\$25.90	\$25.90	\$26.40	\$26.90	\$0.00	0.0%	\$0.50	1.9%	\$0.50	1.9%		
GALVESTON, TEXAS	\$24.00	\$24.50	\$25.25	\$25.75	\$0.50	2.1%	\$0.75	3.1%	\$0.50	2.0%		
HOUSTON, TEXAS	\$27.69	\$27.69			\$0.00	0.0%		0.0%				
SAN ANTONIO, TEXAS	\$22.75	\$22.60	\$23.35	\$23.85	(\$0.15)	-0.7%	\$0.75	3.3%	\$0.50	2.1%		
WHEELING, WEST VIR	\$44.53	\$46.28			\$1.75	3.9%		0.0%				